

# UFED 4PC, UFED Touch2 and UFED InField v7.30

## March 2020

### Device Profiles: Now supporting 30,799 device profiles

Forensic Method	Version 7.30	Total
Logical extraction	129	11,944
Physical extraction*	130	7,605
File system extraction	129	7,607
Extract/disable user lock	20	3,643
Total	408	30,799
*Including GPS devices		

The number of unique mobile devices with passcode capabilities is **5,521**.



### Perform Full File System and Selective File System Extractions on Smartphones with Huawei KIRIN Processor

This new capability in UFED and UFED InField 7.30 allows users to perform a full file system and selective extraction on smartphones with the Huawei HiSilicon KIRIN 970 processor and other popular devices with the KIRIN 659, 960 and 980 chipsets.

This new capability enables extraction from devices with a known passcode or those where no passcode has been set. The supported Huawei or Huawei Honor devices must be running Android 8 or Android 9.

Among the popular devices supported with these extraction methods are the Huawei P30, Huawei P20 and Huawei Mate 20 models.

## ➔ Perform Physical, Full File System and Selective File System Extractions on Smartphones with Samsung Qualcomm Processor

Bypass the screen lock to perform either a physical, full file system or selective file system extraction on popular Samsung models with the Qualcomm processor (SOC).

Among the popular devices supported with these extraction methods are the Samsung J4+, Samsung J6 and Samsung J8 models.

The supported devices must be running Android versions 6 up to version 9, and the device can include one of the following chipsets; 8917, 8937, 8940, 8953, 8976 and SDM450.

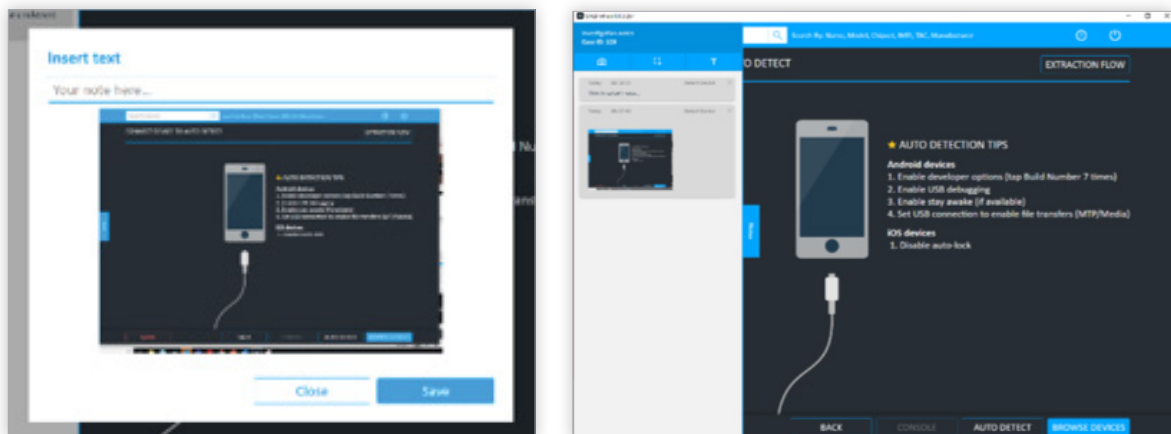
## ➔ Document Your Actions and Incorporate Investigative Notes

As part of the digital data extraction and collection process, users can now add notes, include observations or report any issues encountered during the process. This capability is an effective way to maintain an audit trail documenting actions and decisions taken along the way.

A document with all the investigative notes will be automatically generated and will include relevant metadata such as application state, case details and time stamps.

UFED 4PC users can enable this feature under: Settings > General

*Note: This feature is not available on UFED Touch2 systems.*





## Embed Your Agency Forms or Consent Forms

As part of the informed consent process, where a subject legally authorizes an investigator to look through their digital data, a consent form must be signed.

Now in UFED InField, you can customize a digital consent form, or any other official form that is required as part of your standard procedure and Kiosk upload it to the system. The subject can view and sign the consent form prior to the data extraction process.

The screenshot shows a digital interface titled 'AGENCY FORM' with a 'Consent form' section. On the left, there are input fields for:
 

- Name of consenting person: John Green
- Address: 14 Lake street
- Date: (empty)
- Officer's name: Tina David
- Officer's signature: (handwritten signature)
- Consenting person's signature: (empty)

 At the bottom left are 'ABORT' and 'BACK' buttons. On the right, a preview of a printed consent form is shown, titled 'CONSENT TO OBTAIN PERSONAL INFORMATION'. The preview contains four numbered points:
 

- I, John Green from 14 Lake street hereby provide my consent for the review and examination of the contents of the device(s) for the purpose of identifying and analyzing the relevant information for conducting an investigation.
- I understand that I have a constitutional right to refuse permission for the officer to conduct the search and that I can withdraw my consent at any time.
- I further understand that the process may involve the copying of information contained on the device(s) which will then be examined by the police. (If this document was explained to me by the officer and I have signed it at any time then this will)
- This document was explained to me by the officer and I have signed it at any time then this will

 The preview also shows fields for 'Date', 'Officer's name: Tina David', 'Officer's signature', and 'Consenting person's signature'. At the bottom right of the preview are 'BACK', 'SKIP', and 'CONTINUE' buttons.



## Save and Abort Decoding Process

Users that need to manually stop the decoding process and continue later can now do this. A new <Cancel> button has been added to allow users to abort/cancel. When the decoding is interrupted, a pop-up window is displayed, and the user must acknowledge the action. A .ufd file is generated and can be saved for further decoding later.

*Note: This is not relevant for UFED 4PC/Touch2 units.*



## Windows update package for "Closed" hardware units

InField Kiosk and UFED Touch2 systems, are advised to download and install important Windows security updates. The Windows security update has been packaged for your convenience and is available for automatic installation over the internet from within the product, or from the MyCellebrite community portal, in the add-ons section.



## Additional Enhancements

- A touch-friendly, full-screen scrolling option has been implemented. This allows more intuitive navigation.
- Performance enhancements demonstrate up to 40% speed improvement with checkm8 extraction.
- This version includes a security enhancement regarding ADB key management – from this version, each extraction attempt will generate new temporary keys to be used for the duration of that attempt only.

*Note: We would like to acknowledge KoreLogic for their reporting and cooperation on this issue.*



## Phone List

Full File System and Selective File System extractions on Smartphones with Huawei KIRIN Processor

29 newly supported devices	
Huawei	BLA-L09 Mate 10 Pro, FIG-LX2 Y7s, COR-AL00 Honor Play, HWI-TL00 Nova 2S, AGS2-L09 MediaPad T5, NEO-L29_DS Mate Rs, YAL-AL10 Honor 20 PRO, PCT-L29_DS Honor View 20, EVR-L29 Mate 20 X, VCE-AL00_DS Nova 4, VOG-L29 P30 Pro, EML-L29 P20, COL-L29 Honor 10, COR-L29 Honor Play, SHT-W09 Mediapad M5, CLT-L09 P20 Pro, VTR-L09 P10, ANE-LX1 P20 Lite, ANE-LX3 P20 Lite, FIG-LX1 P Smart, LLD-L31 Honor 9 Lite, VTR-L29 P10, BKL-AL00 Honor V10, BKL-L09 Honor View 10, RVL-AL09 Honor Note 10, LLD-AL20 Honor 9i, LYA-L29 Mate 20 Pro, FLA-AL20 Enjoy 8 Plus, FLA-LX3 Y9 2018

## MTK live: Physical extraction

28 newly supported devices	
Alba	AC70PLV5 7
Allview	X4 Soul
Asus	X015D Zenfone 4 Max Plus, P028 ZenPad 10
BLU	S1
Hisense	F23
Infinix	X522 S2 Pro
Intex	IP0218ND Staari 10
Lenovo	K350t K5, TB-7504X Tab 7
LG GSM	M250N K10 2017, LM-X410PM K30 Sprint
Chinese Android phones	OUKITEL U16 Max, D5.5 Dual Camera Bush Spira, Infocus IF9031 Vision 3, Kenxinda S9, iVooMi Me 3, Vernee Thor E, Vernee Thor Plus
Micromax	HS1_DS
Panasonic	Eluga A3 Pro
Sony (SonyEricsson)	G3311 Xperia L1, I3312 Xperia L3, G3313 Xperia L1, F3113 Xperia XA, G3123 Xperia XA1
Wiko	Harry
ZTE GSM	A7010 Blade A7s

## Physical extraction while bypassing lock

27 newly supported devices	
Alcatel	4044N Go Flip 2, 4044C QUICKFLIP, 4044W
Asus	X008DB Zenfone 3 Max
Blackview	BV5500
Gionee	GN5005L_DS, GN5001_DS, F100S_DS, F100SD_DS, GN3003L_DS, E6 Mini, F100_DS, V188S_DS
HTC	6275, PB99400 Desire CDMA



Huawei	NMO-GT3, NMO-L31 GR5 Mini
Lenovo	K10e70
Chinese phones	SiGMA S3500_DS X-Style
Chinese Android phones	Soyes XS
Chinese Android phones	R17_DS
Nokia GSM	215 (RM-1110)
Samsung GSM	SM-A260G_DS Galaxy A2 Core, SC-05G (Galaxy S6), SM-J415G_DS Galaxy J4 Plus, SM-J610G_DS Galaxy J6 Plus
Tablets	Samsung GT-P3113TS Galaxy Tab 2 7.0

## Physical extraction

130 newly supported devices	
Alcatel	4044N Go Flip 2, 4044C QUICKFLIP, 4044W
Asus	X017DA ZenFone 5Q, ZC600KL, X00TD Zenfone Max Pro, ZB602KL, X00QD Zenfone 5, ZE620KL, Z01MDA ZenFone 4 Selfie Pro, ZD552KL, X00RD ZenFone Live, ZA550KL, Z01BDC ZenFone 3, ZC551KL
BLU	N1 Bold, L0150WW_DS Life One X3, V0311WW Vivo XI Plus, B100DL View 1
Blackview	BV5500
Casio	C771 GzOne Commando
Coolpad	SAC-A0_DS 26
Gionee	GN5005L_DS, F205_DS, S11L, GN5007L, S10BL, M5_DS Marathon, M6SPlus, E6T, 20190619G_DS M11s, GN5001_DS, V188, F100S_DS, F100SD_DS, GN3003L_DS, GN8003_DS M6, 20190620G_DS K3, E6 Mini, GN8002S_DS M6 Plus, GN777, F100_DS, F105_DS, V188S_DS
Google	G020I Pixel 4
Hisense	HLTE202N A5, HLTE730T A6L
HTC	6275, PB99400 Desire CDMA
Huawei	YAL-L21_DS Nova 5T, ASK-AL00X_DS Honor Play3, LIO-L29 Mate 30 Pro, BLA-L09 Mate 10 Pro, YAL-AL50, VNS-L23 P9 lite, ART-TL00X, LRA-AL00_DS Honor 20 Lite, LIO-AN00 Mate 30 Pro 5G, TAS-AN00 Mate 30 5G, DRA-LX3_DS Y5 2018, MRD-LX1 Y6 2019, ARS-L22_DS Y Max, ALP-TL00 Mate 10, NMO-GT3, NMO-L31 GR5 Mini
K-Touch	Q3 Q31, T3, T9_DS T91, T2S_DS T2A
Lenovo	K10e70
LG CDMA	H790, bullhead Nexus 5x, LGM322 X Charge Xfinity, X Power 2
LG GSM	L322DL Journey Lte, L423DL Solo, LM-G850EMW G8X ThinkQ, LMX130IM_DS W10
Chinese phones	L9_DS, 20170319_DS Liaolajiao G2, SiGMA S3500_DS X-Style, Xiaolajiao G-660_DS A6 (F6), Xiaolajiao G-660_DS L9, Xiaolajiao G-109_DS W11, Xiaolajiao G-666_DS V5, Vkworld Z3
Chinese Android phones	Soyes XS, Chinese Brand 20190718Q Hong La Jiao 9 Red Chili Phone, R17_DS, Nubia NX627J_DS Z20, Xgody S10, Xgody Mate 20 Mini_DS
Meizu	M928Q_DS 16T, M973Q 16s Pro
Motorola GSM	XT1922-3_DS Moto G6 Play, XT2019-2 Moto G8 Plus, XT2015-2 Moto G8 Play, XT2025-2 Moto E6s
NTT Docomo	SO-02H (Xperia Z5 Compact), SO-03H (Xperia Z5 Premium)



Nokia GSM	230_DS, TA-1172 X71, TA-1179 2.2
OnePlus	HD1910 7T Pro, HD1900 7T
Oppo	3005_DS, R7st_DS R7, CPH1851 AX5, PCEM00 A9x, PCHM30_DS A11x, PBAM00 A5, PDBM00_DS A8, CPH1823_DS F9 Pro, CPH1931_DS A5 2020, PCHM10_DS A11, PCLM10_DS Reno Ace, CPH1920_DS AX5s, PCNM00_DS K5
RCA	Q2_DS
Realme	RMX1991_DS X2, RMX1971_DS Q, RMX1931_DS X2 Pro, RMX1925_DS, RMX1921_DS XT, RMX1993_DS X2
Samsung GSM	SM-A515F_DS Galaxy A51, SM-G611M_DS Galaxy J7 Prime 2, SM-M3070_DS Galaxy M30s, SM-A202F_DS Galaxy A20e, SM-A307GN_DS Galaxy A30s, SM-S260DL Galaxy J2, SM-A260G_DS Galaxy A2 Core, SM-A705MN_DS Galaxy A70, SM-S102DL Galaxy A10e, SM-A505G_DS Galaxy A50, SM-A2070_DS Galaxy A20s
Smart Phones/PDAs	Kirin Decrypting Bootloader
Sony (SonyEricsson)	I3312 Xperia L3
TCL	A503DL TracFone
Ulefone	Note 7_DS
VIVO	1915_DS, V1941A_DS U3, V1924A Nex 3, V1936A_DS Iqoo Neo 855, 1913 Nex
Xiaomi	M1910F4G_DS Mi Note 10, M1908F1XE_DS Mi 9 Pro, M1908C3IC_DS Redmi 8, M1901F7BE Redmi Note 7 Pro
ZTE GSM	V1050 Blade 20 Smart, A7010 Blade A7s

## File system extraction while bypassing lock

20 newly supported devices	
Asus	X008D Zenfone Pegasus 3
Blackview	BV5500
Gionee	GN5005L_DS, GN5001_DS, F100S_DS, F100SD_DS, GN3003L_DS, F100_DS
HTC	6275, PB99400 Desire CDMA
Huawei	NMO-GT3, NMO-L31 GR5 Mini
Chinese Android phones	Soyes XS, Xgody S10, Xgody Mate 20 Mini_DS, YEZZ Andy 5E
Myria	Brand MY9053_DS Myria Wide 2
Samsung GSM	SM-A260G_DS Galaxy A2 Core, SM-J415G_DS Galaxy J4 Plus, SM-J610G_DS Galaxy J6 Plus

## File system extraction

129 newly supported devices	
Alba	AC70PLV5 7
BLU	N1 Bold, L0150WW_DS Life One X3, V0311WW Vivo XI Plus, B100DL View 1
Blackview	BV5500
Casio	C771 GzOne Commando
Coolpad	SAC-A0_DS 26
Gionee	GN5005L_DS, F205_DS, S11L, GN5007L, M5_DS Marathon, M6SPlus, E6T, 20190619G_DS M11s, GN5001_DS, V188, F100S_DS, F100SD_DS, GN3003L_DS, GN8003_DS M6, 20190620G_DS K3, E6 Mini, GN8002S_DS M6 Plus, GN777, F100_DS, V188S_DS



Google	G020I Pixel 4
Hisense	HLTE202N A5, HLTE730T A6L
Huawei	YAL-L21_DS Nova 5T, ASK-AL00X_DS Honor Play3, LIO-L29 Mate 30 Pro, BLA-L09 Mate 10 Pro, YAL-AL50, VNS-L23 P9 lite, ART-TL00X, LRA-AL00_DS Honor 20 Lite, LIO-AN00 Mate 30 Pro 5G, TAS-AN00 Mate 30 5G, DRA-LX3_DS Y5 2018, MRD-LX1 Y6 2019, ARS-L22_DS Y Max, ALP-TL00 Mate 10
Intex	IP0218ND Staari 10, T9_DS T91, T2S_DS T2A
K-Touch	Q3 Q31, T3,
Lenovo	K10e70
LG GSM	L322DL Journey Lte, L423DL Solo, LM-G850EMW G8X ThinkQ, LMX130IM_DS W10
Chinese phones	L9_DS, 20170319_DS Liaolajiao G2, Xiaolajiao G-660_DS A6 (F6), Xiaolajiao G-660_DS L9, Xiaolajiao G-109_DS W11, Xiaolajiao G-666_DS V5, Vkworld Z3
Chinese Android phones	Soyes XS, Chinese Brand 20190718Q Hong La Jiao 9 Red Chili Phone, R17_DS, Nubia NX627J_DS Z20, Xgody S10, Xgody Mate 20 Mini_DS
Meizu	M928Q_DS 16T, M973Q 16s Pro
Motorola GSM	XT1922-3_DS Moto G6 Play, XT2019-2 Moto G8 Plus, XT2015-2 Moto G8 Play, XT2025-2 Moto E6s
NTT Docomo	S0-02H (Xperia Z5 Compact), S0-03H (Xperia Z5 Premium)
Nokia GSM	230_DS, TA-1172 X71, TA-1179 2.2, Fake Nokia E79+
OnePlus	HD1910 7T Pro, HD1900 7T
Oppo	3005_DS, R7st_DS R7, CPH1851 AX5, PCEM00 A9x, PCHM30_DS A11x, PBAM00 A5, PDBM00_DS A8, CPH1823_DS F9 Pro, CPH1931_DS A5 2020, PCHM10_DS A11, PCLM10_DS Reno Ace, CPH1920_DS AX5s, PCNM00_DS K5, CPH1723 F5, A79
RCA	Q2_DS
Realme	RMX1991_DS X2, RMX1971_DS Q, RMX1931_DS X2 Pro, RMX1925_DS, RMX1921_DS XT, RMX1993_DS X2
Samsung GSM	SM-A515F_DS Galaxy A51, SM-G611M_DS Galaxy J7 Prime 2, SM-M3070_DS Galaxy M30s, SM-A202F_DS Galaxy A20e, SM-A307GN_DS Galaxy A30s, SM-S260DL Galaxy J2, SM-A260G_DS Galaxy A2 Core, SM-A705MN_DS Galaxy A70, SM-S102DL Galaxy A10e, SM-A505G_DS Galaxy A50, SM-A2070_DS Galaxy A20s
Smart Phones/PDAs	Kirin Decrypting Bootloader
Sony (SonyEricsson)	I3312 Xperia L3
TCL	A503DL TracFone
Ulefone	Note 7_DS
VIVO	1915_DS, V1941A_DS U3, V1924A Nex 3, V1936A_DS Iqoo Neo 855, 1913 Nex
Xiaomi	M1910F4G_DS Mi Note 10, M1908F1XE_DS Mi 9 Pro, M1908C3IC_DS Redmi 8, M1901F7BE Redmi Note 7 Pro, M1803D5XE Redmi 6
Zanco	AM0505_DS
ZTE GSM	V1050 Blade 20 Smart, A7010 Blade A7s

## Logical extraction

129 newly supported devices	
Alcatel	4044W
BLU	N1 Bold, V0311WW Vivo XI Plus, B100DL View 1, L0150WW_DS Life One X3



Blackview	BV5500
Coolpad	SAC-A0_DS 26
Doro	DFC-0180 7050
Gionee	GN5005L_DS, F205_DS, S11L, F100S_DS, F100SD_DS, M6SPlus, E6T, 20190619G_DS M11s, GN5001_DS, V188, GN3003L_DS, GN8003_DS M6, M7L, M5_DS Marathon, GN5007L, S10BL, 20190620G_DS K3, E6 Mini, GN8002S_DS M6 Plus, GN777, F100_DS, V188S_DS
Google	G020I Pixel 4
Hisense	HLTE202N A5, HLTE730T A6L
Huawei	VNS-L23 P9 lite, ART-TL00X, YAL-AL50, LIO-L29 Mate 30 Pro, BLA-L09 Mate 10 Pro, DRA-LX3_DS Y5 2018, ARS-L22_DS Y Max, YAL-L21_DS Nova 5T, ASK-AL00X_DS Honor Play3, MRD-LX1 Y6 2019, LIO-AN00 Mate 30 Pro 5G, LRA-AL00_DS Honor 20 Lite, TAS-AN00 Mate 30 5G
K-Touch	Q3 Q31, T3, T9_DS T91, T2S_DS T2A
Lenovo	K10e70
LG GSM	LM-G850EMW G8X ThinkQ, L322DL Journey Lte, L423DL Solo, LMX130IM_DS W10
Chinese phones	L9_DS, 20170319_DS Liaolajiao G2, E241S_DS, SiGMA S3500_DS X-Style, Xiaolajiao G-109_DS W11, Xiaolajiao G-660_DS A6 (F6), Xiaolajiao G-660_DS L9, Xiaolajiao G-666_DS V5, Vkworld Z3
Chinese Android phones	Soyes XS, Xgody S10, Xgody Mate 20 Mini_DS, Chinese Brand 20190718Q Hong La Jiao 9 Red Chili Phone, Nubia NX627J_DS Z20, R17_DS
Maxcom	MK241
Meizu	M928Q_DS 16T, M973Q 16s Pro
Motorola GSM	XT2025-2 Moto E6s
Motorola GSM	XT2019-2 Moto G8 Plus
Motorola GSM	XT1922-3_DS Moto G6 Play
Motorola GSM	XT2015-2 Moto G8 Play
Nokia GSM	TA-1172 X71, TA-1179 2.2, TA-1170_DS 2720 Flip, TA-1175_DS 2720 Flip
OnePlus	HD1910 7T Pro, HD1900 7T
Oppo	3005_DS, PCHM30_DS A11x, PCEM00 A9x, PBAM00 A5, PCAM10 A9, PDBM00_DS A8, CPH1823_DS F9 Pro, CPH1931_DS A5 2020, PCHM10_DS A11, PCLM10_DS Reno Ace, PCNM00_DS K5, CPH1851 AX5, CPH1920_DS AX5s, R7st_DS R7
RCA	Q2_DS
Realme	RMX1991_DS X2, RMX1971_DS Q, RMX1931_DS X2 Pro, RMX1925_DS, RMX1921_DS XT, RMX1993_DS X2
Samsung GSM	SM-S102DL Galaxy A10e, SM-A515F_DS Galaxy A51, SM-G611M_DS Galaxy J7 Prime 2, SM-A202F_DS Galaxy A20e, SM-A307GN_DS Galaxy A30s, SM-M3070_DS Galaxy M30s, SM-A705MN_DS Galaxy A70, SM-S260DL Galaxy J2, SM-A505G_DS Galaxy A50, SM-N976N Galaxy Note 10 Plus 5G, SM-A2070_DS Galaxy A20s
Sony (SonyEricsson)	I3312 Xperia L3
TCL	A503DL TracFone
Ulefone	Note 7_DS
VIVO	1915_DS, V1936A_DS Iqoo Neo 855, V1924A Nex 3, V1941A_DS U3, 1913 Nex
Xiaomi	M1901F7BE Redmi Note 7 Pro, M1910F4G_DS Mi Note 10, M1908C3IC_DS Redmi 8, M1908F1XE_DS Mi 9 Pro
Zanco	AM0505_DS
ZTE GSM	V1050 Blade 20 Smart, A7010 Blade A7s

