

UFED Ultimate, UFED InField, UFED Logical Analyzer and Cellebrite Reader v7.21.1

July 2019

Now supporting: 28,936 device profiles

App versions: 9,321

Forensic Methods	7.21.1	Total
Logical extraction	173	11,436
Physical extraction*	161	7,103
File system extraction	176	7,067
Extract/disable user lock	36	3,330
Total	546	28,936
*Including GPS devices		

The number of unique mobile devices with passcode capabilities is 5,346

App support

- Now supporting the latest version of the Snapchat app for Android devices, including full decoding of chats.
- Following the recent support of Telegram messenger for newer iOS versions in the last UFED Physical Analyzer release, we have added new support for calls and shared contacts.
- 131 updated application versions for iOS and Android devices.

UFED Physical Analyzer

Process data faster with less memory consumption



As newer models of smartphone devices arrive with higher internal storage capacity, the amount of data to decode and process is much larger, impacting the computer memory consumption. In this version of UFED Physical Analyzer 7.21.1, we have improved the performance of the extraction processing and dramatically reduced the memory consumption by up to 50%. This dramatic change will enable you to successfully open, process and decode much larger extraction dumps. As a part of this infrastructure improvement, Memory ranges and Highlights Information are now stored in dedicated highlights Databases.

Note: This requires additional temporary disk storage (that will be automatically deleted once you close the application). You can change the database path in the settings (under the Hex viewer tab).

Decoding support for the LG database LDB_MainData.db



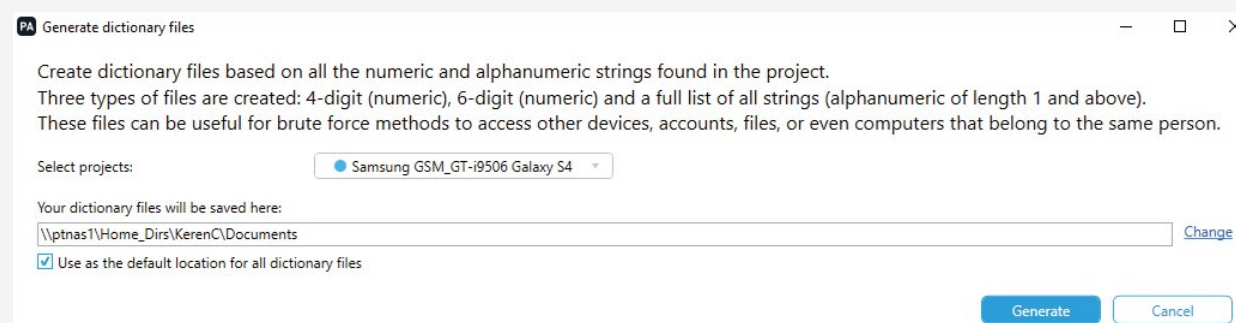
The LG database, LDB_MainData.db, contains device events and application data activity. You can now recover application usage data including install / uninstall application events, and time zone changes.

Generate dictionary files

In this version of UFED Physical Analyzer, you can now generate a full dictionary files based on all the numeric and alphanumeric strings found in a project. This can be helpful when trying to use brute force methods to access other devices, accounts, files, or even computers that belong to the same person.

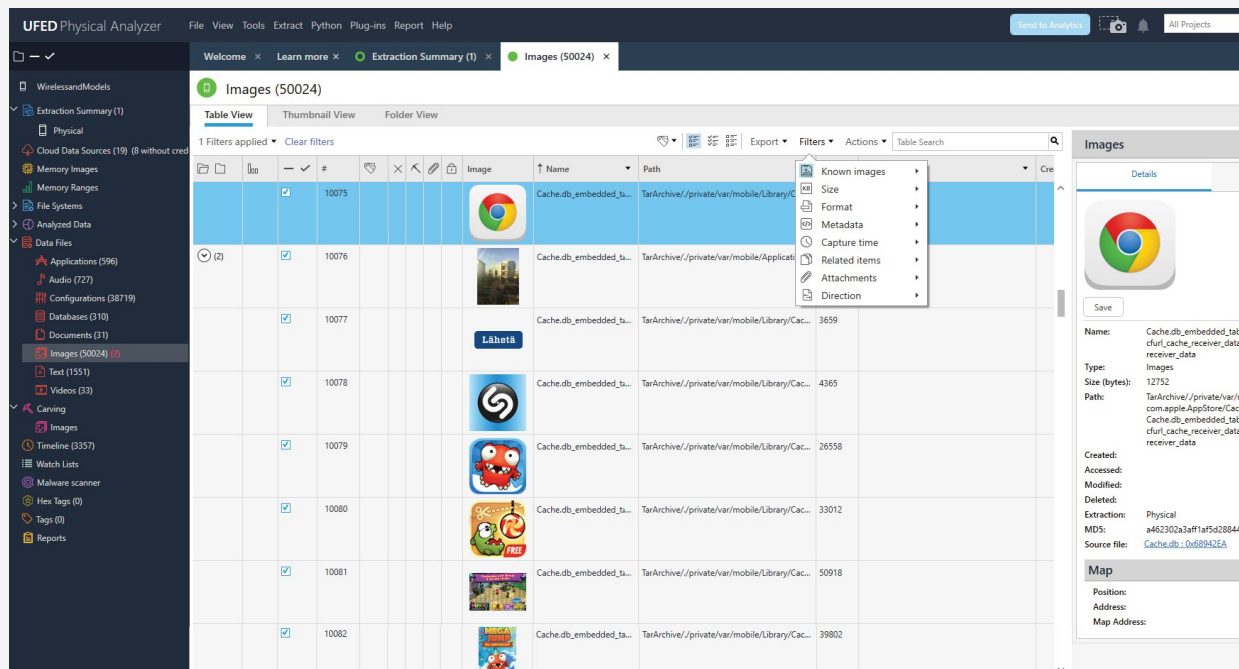
To generate a word list, go to tools - Generate dictionary files, select project and output path.

Three types of files are created: 4-digit (numeric), 6-digit (numeric) and a full list of all strings (alphanumeric of length 1 and above).



UX Improvements

The actions and filtering functions have been consolidated under a single menu for an easier and more intuitive experience.



Get more data from the iOS Health app



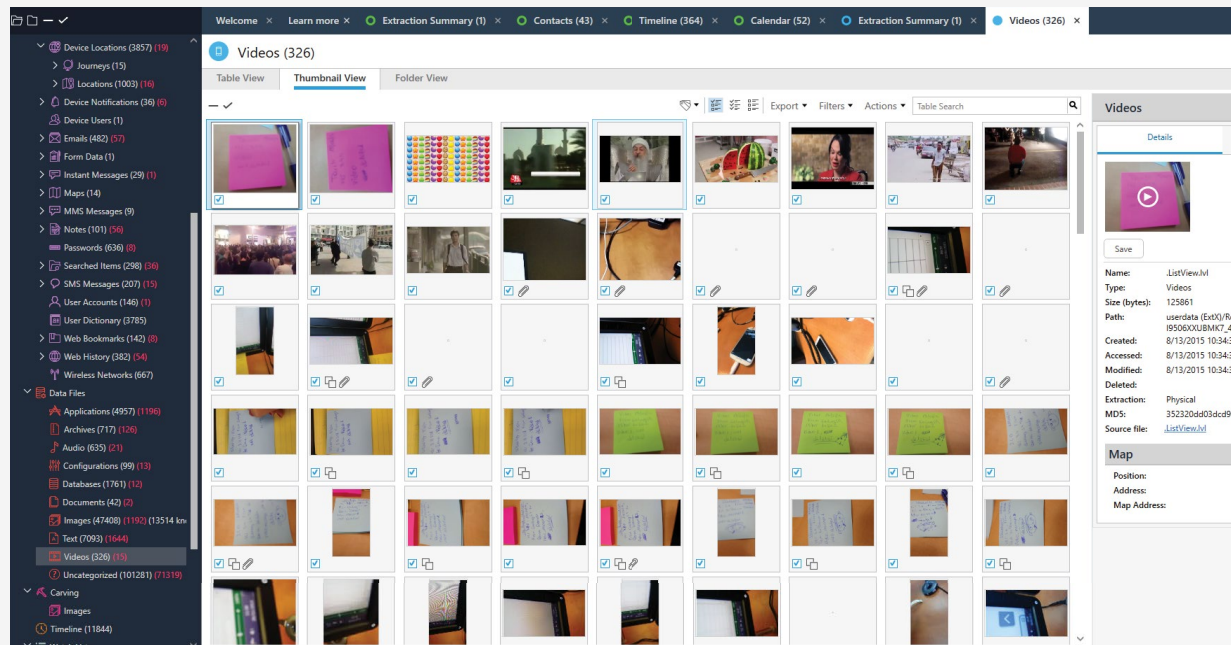
In this version, we have added decoding support for heart rate data.

Note: The data is aggregated to help you focus and avoid data overload. (Aggregation is 30 minutes; heart rate 5 bpm)



Video thumbnails view

In this version of UFED Physical Analyzer, we have added a new video thumbnail view for Video files.



UFED 4PC, UFED Touch 2 and UFED InField

Industry First: Samsung Exynos Physical Bypass Solution



In February as part of UFED 7.15, we released an exclusive generic solution that enables access Samsung devices with the Exynos processor. In this new UFED version, we are pleased to announce that we have enhanced this capability and have added support for an additional 13 devices. This decrypting bootloader capability enables unlock, full file system and physical extractions from many more Samsung devices, including: SM-G950F Galaxy S8, SM-G955FD Galaxy S8+, SM-G955F Galaxy S8+, SM-N950F Galaxy Note 8, SM-J600G_DS Galaxy J6, SM-J600F Galaxy J6 (2018) and SM-A600FN Galaxy A6 (2018).



Device properties screen added to Advanced Logical workflow

The device properties screen has now been added to the advanced logical extraction flow. This feature allows the user to view important data from the Android mobile device such as Storage, IMEI, Apps, Encryption, OS version etc. This new feature is controlled from UFED settings. By having visibility to the size of data and types of media stored on the device prior to starting the extraction, you can eliminate unnecessary work and make informed decisions.

Device properties	
Model: Huawei EVA-AL10 P9	Security patch: 2016-12-01
Device name: EVA-AL10	IMEI: 860121035276941
OS: Android 7.0	Apps: 165
Chipset: hi3650	
Rooted: No	

Search bar added to main UFED screen



A new "search" box has been added to the auto-detect screen of UFED enabling users to quickly search devices by name, IMEI, TAC, and Chipset.

Enhanced Dynamic profiles



Enhancement of the dynamic profiles mechanism which will enable to create on-the-fly profiles for phone models which were not formally approved in our lab. To keep you on track with the latest capabilities, the UFED solution suggests additional available methods based on our unique capabilities database. Users will see the new methods labelled Untested.

Capture high-quality images with UFED Camera



Users of the UFED Camera can now determine the quality of the images taken using a list of pre-defined options. Through a newly applied setting in the application settings screen, users can choose between three options; best, normal and low, and save this setting for all future image captures.

Solved Issues – UFED Physical Analyzer

- Errors and empty attachment while decoding latest WhatsApp versions for iOS devices.
- Failures while activating the retrieve location address functionality.
- An error while decoding KnowledgeC database.
- Error when loading the timeline in Report in Czech language.
- Trace error while processing BFU extraction for iOS devices.
- Missing Bluetooth devices decoding when loading FFS dump for iOS devices.
- Missing several secret chats from Telegram messenger app for Android devices.
- The setting “Disable internet traffic” in UFED Physical Analyzer and Cellebrite Reader now disables any cloud public data activity.

Solved Issues – UFED / UFED Infield

- Missing Call logs for Nokia 105 (RM-1134) when performing logical extraction.
- Failure while performing Physical extraction for the Kyocera S1310 device.
- Failure when trying to extract Apps Data from Huawei Ascend devices.



iOS: New and updated apps

64 updated apps	
Any.DO	4.29.8
ASKfm	4.40
Azar	1.36.0
Booking.com	19.4
Chrome	74.0.3729.155
Confide	8.3.4
DJI GO 4	4.3.18
Dropbox	144.2
Facebook	223.0
Facebook Messenger	218.0
Firefox	17.3
Flipboard	4.2.39
Foursquare	11.15.1
Garmin Connect	4.19
Gmail	6.0.190505
Google App	74.1
Google Docs	1.2019.20203
Google Drive	4.2019.22204
Google Duo	55.0
Google+	6.58.1
Grindr	5.9.2
GroupMe	5.31.0
hike messenger	6.1.93
Instagram	96.0
InstaMessage	3.2.2
KakaoTalk	8.4.1
KeepSafe	8.32.1
LINE	9.8.0
LinkedIn	9.1.134
Mail.Ru	9.22
MeetMe	13.19.0
Odnoklassniki	8.2



OkCupid	30.0.0
Pinterest	7.19
QQ	8.0.6
QQ Browser	9.3.0
Runtastic	9.4
Scruff	6.0001
Skout	6.8.1
Skype	8.46
Snapchat	10.58.1.1
Telegram Messenger	5.7
Telegram X	5.2
Text Free Ultra Texting	11.42
Text Me!	3.18.1
Text Now	9.14.0
textPlus	7.5.3
Threema	4.2.2
TigerText	8.4
TikTok	11.5.0
Tinder	10.13.0
Truecaller	10.12
Twitter	7.51
Viber	10.8
Vkontakte	5.16.1
Voxer	3.21.30
Waze	4.51.2
WeChat	7.0.4
Weibo	9.5.1
WhatsApp	2.19.51
Whisper	8.12.0
Yandex Browser	19.4.3.448
Yubo	3.27
Zalo	150502



Android: New and updated apps

67 updated apps	
ASKfm	4.4
Azar	3.41.2-arm64
Booking.com	17.8
Confide	5.9.6
Dropbox	144.2.12
Facebook	223.0.0.47.120
Facebook Messenger	216.0.0.20.114
Firefox	67.0
Fitbit	2.94
Gmail	2019.04.28.246421133.release
Google Calendar	6.0.36-25026979-release
Google Docs	1.19.192.07.45
Google Drive	2.19.212.04.45
Google Duo	55.1.250537758.DR55_RC09
Google Maps	10.17.2
Google Photos	4.17.0.249919200
Google Quick Search Box	9.91.6.21.arm64
Google+	10.32.0.248161277
Grindr	5.9.2
Hot or Not	5.119.2
ICQ	7.5.1(823561)
imo	9.8.000000012091
Instagram	96.0.0.28.114
Kakao Story	5.8.2
KakaoTalk	8.4.0
Keeper	14.2.4.2
KeepSafe	9.35.1
LINE	9.8.1
LinkedIn	4.1.315
Mail.Ru	9.6.1.26984
Mappy	6.1922.18691
Meet24	1.32.3
My Tracks	4.2.8
Odnoklassniki	19.5.20
One Drive	5.32.1
Opera Mobile	52.2.2517.139816



Release Notes

Outlook.com	3.0.73
Pokemon GO	0.145.0
Runtastic	9.4
SayHi	7.26
Skout	6.8.0
Skype	8.46.0.60
Snapchat	10.58.0.0
Soma	2.0.17
Swarm	6.3.1
Sygic	18.0.10
Telegram Messenger	5.7.1
Text Me Up	3.18.0
Text Now	6.28.0.3
textPlus	7.5.1
TikTok	11.6.3
Truecaller	10.32.6
Tumblr	13.4.0.00
Twitter	7.98.0-release.61
Uber	4.264.10003
UC Browser	12.11.8.1186
Vaulty	4.8.14.release r8500
Viber	10.8.0.4
Vkontakte	5.35
Waze	4.51.2.1
WeChat	7.0.4
Weibo	3.1.6
WhatsApp	2.19.150
Whisper	9.29.3
Yandex Browser	19.4.3.352
Zalo	19.05.02.r1
Zello	4.62



Phone List

Decrypting bootloader, full file system and disable user lock for 13 newly supported devices	
Samsung CDMA	SM-N920V Galaxy Note 5
Samsung GSM	SM-J327A Galaxy J3 2017, SM-S337TL J3 Luna Pro, SM-J600G_DS Galaxy J6, SM-J600F Galaxy J6 (2018), SM-A600FN Galaxy A6 (2018), SM-J710FN Galaxy J7, SM-G925F Galaxy S6 Edge, SM-N950F Galaxy Note 8, SM-G950F Galaxy S8, SM-G950FD Galaxy S8, SM-G955FD Galaxy S8+, SM-G955F Galaxy S8+

Physical extraction while bypassing lock

53 newly supported devices	
Alcatel	5017X OneTouch Pixi 3 4.5
Apple	Fake MNRM2CH_A iPhone 7 Plus, Fake iPhone X MT982ZA_A, Fake iPhone X MQA62CH_A, Fake XS iPhone MQA52CH_A, Fake iPhone XS Max MNRJ2CH_A
BLU	Studio Mega
Blackview	A30, A60
Homtom	S16
HTC	6275, PB99400 Desire CDMA
Huawei	NMO-GT3, NMO-L31 GR5 Mini
I-Mobile	T3_DS
Leagoo	Z6
Lenovo	TB3-850F Tab3 8, PB2-670M Phab 2 Plus
Chinese phones	ECO Eco Senior_DS, Senseit L131, TT110 TTfone, NewMind F15 Plus, Melrose T1
Chinese Android phones	Chinese Brand S9 TEENO VMobilem, Orange Melrose S9P, Easyphone NP-10, Qcom QS5509A QS5509QL
Samsung CDMA	SM-J327V Galaxy J3 2017, SM-J327VPP Galaxy J3 2017, SM-N920V Galaxy Note 5
Samsung GSM	Fake Samsung SM-G9750 Galaxy S10 PRO, SM-J327W Galaxy J3 Prime, SM-J250M Galaxy J2 Pro, SM-J810M_DS Galaxy J8, SC-05G (Galaxy S6), SM-J327A Galaxy J3 2017, SM-S337TL J3 Luna Pro, SM-J600G_DS Galaxy J6, SM-J600F Galaxy J6 (2018), SM-A600FN Galaxy A6 (2018), SM-J710FN Galaxy J7, SM-J810F_DS Galaxy J8, SM-N950F Galaxy Note 8, SM-G950F Galaxy S8, SM-G950FD Galaxy S8, SM-G955FD Galaxy S8+, SM-G955F Galaxy S8+, DS Galaxy J7 Metal 2016, J710MN
swisstone	SC 330
Tablets	Samsung GT-P3113TS Galaxy Tab 2 7.0
Tecno	LA6 Pouvoir 1
TRUE	SSB-508D Slim Phone
VIVO	Y51t L
Wiko	W-P220 View 2 Go
Vodafone	VFD 710 Smart V8 890N Smart 4 Turbo



Physical extraction

161 newly supported devices	
Alcatel	5017X OneTouch Pixi 3 4.5
Apple	Fake MNRM2CH_A iPhone 7 Plus, Fake iPhone X MT982ZA_A, Fake iPhone X MQA62CH_A, Fake XS iPhone MQA52CH_A, Fake iPhone XS Max MNRJ2CH_A
Archos	50c Platinum
BLU	Studio Mega, Vivo XL4, Vivo One PLUS, Vivo GO
Blackview	A30, BV7000, BV9500 Pro, A60
Doogee	N10, Y8
Drone	DJI - Mavic Air, DJI - Mavic Pro 2
Fly	Banana_DS
Google	Pixel 3a XL
Homtom	H10, S16, C2
Huawei	COR-AL00 Honor Play, JKM-TL00 Enjoy 9 Plus, PCT-L29_DS Honor View 20, EVR-L29 Mate 20 X, SNE-AL00 Maimang 7, EVR-AL00 Mate 20 X, VCE-AL00_DS Nova 4, JAT-LX3 Honor 8A, POT-LX3 P Smart, LDN-LX2 Nova 2 Lite, MAR-LX3A P30 Lite
I-Mobile	T3_DS
Infinix	X608 HOT 6 Pro, X624B HOT7
K-Touch	I9
Konrow	Slider_SD, Chipo 3, K-Flip
Kyocera	KYF31 (GRATINA 4G)
Leagoo	Power 2 Pro, Z6, M11
Lenovo	L58091 S5 Pro GT, L78071 Z5s, TB3-850F Tab3 8, PB2-670M Phab 2 Plus, L78032 Z5 Pro GT
LG GSM	LM-Q610MA Q7 Plus, LM-X410PM K30 Sprint, LG-Q710AL Stylo 4 Boost
Chinese phones	Chinese Brand One_DS DTECH, ECO Eco Senior_DS, Senseit L131, TT110 Ttfone, STK R45i, NewMind F15 Plus, OBI F240_DS, NewMind F8, T130_DS Ttsims, Melrose T1, K689_DS, Kux T99, NewMind F15, Easyphone NP66, A8 Mini_DS, Chinese Brand T19 Cectdigi, Itel it5630, Itel it2171, Slider W20C_DS
Chinese Android phones	20181225 Red Chilli 7R Xiaolajiao, imo Q3 Plus, imo Q2 Plus, Chinese Brand S9 TEENO VMobile, Orange Melrose S9P, 360 180-A01 Phone N7,UMIDIGI A3 Pro_DS, Easyphone NP-10
Motorola GSM	XT1962-4_DS Moto G7, XT1965-3_DS Moto G7 Plus, XT1922-6 Moto G6 Play, XT1921-5 Moto E5 Play, XT1955-4_DS Moto G7 Power, XT1941-4 One
NTT Docomo	F-02J
Nokia GSM	TA-1047_DS Nokia 1, TA-1060 Nokia 1 Dark Blue, TA-1125 3.1 Plus, TA-1087 9 PureView, TA-1082 9 PureView, TA-1022
Oppo	PCAM00 Reno7, GM1913 7 Pro, RMX1809 Realme 2, CPH1819 F7, CPH1893 R17 Neo



Samsung GSM	SM-T387V Galaxy Tab A 8.0, Fake Samsung SM-G9750 Galaxy S10 PRO, SM-G930VL Galaxy S7, SM-A305G_DS Galaxy A30, SM-S757BL Galaxy J7 Crown, SM-T720 Galaxy Tab S5e, SM-M105M Galaxy M10, SM-A105F Galaxy A10, SM-A705FN_DS Galaxy A70, SM-G975W Galaxy S10 Plus, SM-J327W Galaxy J3 Prime, SM-A3050_DS Galaxy A40s, SM-M305M_DS Galaxy M30, SM-A6060 Galaxy A60, SM-A505FN_DS Galaxy A50, SM-A405FN_DS Galaxy A40, SM-J250M Galaxy J2 Pro, SM-G970W Galaxy S10e, SM-G973W Galaxy S10, SM-S357BL Galaxy J3 Orbit, SM-A105M_DS Galaxy A10, SM-A205G_DS Galaxy A20, SM-G970U Galaxy S10e, SM-G977N Galaxy S10 5G, SM-G887F_DS Galaxy A8s, SM-G532G_DS Galaxy J2 Prime, SC-02H Galaxy S7 Edge, SM-J810M_DS Galaxy J8, SM-G611F_DS Galaxy J7 Prime 2, SM-A9200_DS Galaxy A9s, SM-M205F Galaxy M20
Smartisan	OE106 JianGuo Pro 2s
Sony (SonyEricsson)	I4193 Xperia 10, G3123 Xperia XA1, E5633 Xperia M5 Dual, I4293 Xperia 10 Plus
swisstone	SC 580, SC 710, SC 330
Texet	TM-D327, TM-D328_DS
TRUE	SSB-508D Slim Phone
Ulefone	S8
VIVO	V1818CT Y91, Y51t L, 1804 V11, V1732A Y81s, V1818A U1, V1816A X23, V1824A_DS iQOO
Vodafone	889N Smart 4 Turbo
Wiko	W-V600 Harry2, W-P220 View 2 Go
Xiaomi	M1807E8A_SD MI 8 PRO, M1902F1A Mi 9, Xiaomi M1901F9E MI Play, MI 8, M1803E7SG Redmi Note 5, TD-LTE M1806D9E Mi Pad 4
ZTE GSM	Z559DL Blade T2 Lite, A1R Axon

File system extraction while bypassing lock

29 newly supported devices	
Apple	Fake MNRM2CH_A iPhone 7 Plus, Fake iPhone X MQA62CH_A
HTC	6275,
PB99400 Desire CDMA	
Huawei	VTR-L09 P10, NMO-GT3, NMO-L31 GR5 Mini
Leagoo	Z6
Lenovo	PB2-670M Phab 2 Plus
LG CDMA	VN220
Chinese Android phones	Chinese Brand S9 TEENO VMobile, Orange Melrose S9P
Samsung GSM	Fake Samsung SM-G9750 Galaxy S10 PRO, SM-J327W Galaxy J3 Prime, SM-J250M Galaxy J2 Pro, SM-J810M_DS Galaxy J8, SM-DS Galaxy J1 Mini Prime, SM-J106B, SM-DS Galaxy J1 Ace Neo, SM-J111F, SM-S337TL J3 Luna Pro, SM-J600G_DS Galaxy J6, SM-J600F Galaxy J6 (2018), SM-A600FN Galaxy A6 (2018), SM-J810F_DS Galaxy J8, SM-G950FD Galaxy S8, DS Galaxy J7 Metal 2016, J710MN
TRUE	SSB-508D Slim Phone



File system extraction

176 newly supported devices	
Alcatel	5017X OneTouch Pixi 3 4.5
Apple	Fake MNRM2CH_A iPhone 7 Plus, iPhone XR (A1984), iPad Pro 12.9 (A1670), Fake iPhone 7 MF354ZP_A, Fake iPhone X MT982ZA_A, Fake iPhone X MQA62CH_A, Fake XS iPhone MQA52CH_A, Fake iPhone 8 MQ6K2ZP_A, Fake iPhone XS Max MNRJ2CH_A, iPad Air WiFi (3rd Gen) (A2152), iPad Mini (5th Gen) (A2133)
Archos	50c Platinum
BLU	Studio Mega, Vivo XL4, Vivo One PLUS, T276T Jenny TV, T193 Tank II, Vivo GO
Blackview	A30, BV7000, BV9500 Pro, A60
Doogee	N10, Y8
Drone	DJI - Mavic Air, DJI - Mavic Pro 2, Parrot Bebop, Parrot Bebop 2
Fly	Banana_DS, FF250_DS
Google	Pixel 3a XL
Homtom	H10, S16, C2
Huawei	COR-AL00 Honor Play, JKM-TL00 Enjoy 9 Plus, PCT-L29_DS Honor View 20, EVR-L29 Mate 20 X, SNE-AL00 Maimang 7, EVR-AL00 Mate 20 X, VCE-AL00_DS Nova 4, JAT-LX3 Honor 8A, POT-LX3 P Smart, LDN-LX2 Nova 2 Lite, MAR-LX3A P30 Lite
I-Mobile	T3_DS
Infinix	X608 HOT 6 Pro, X624B HOT7
K-Touch	I9
Konrow	Slider_SD, Chipo 3, K-Flip
Kyocera	KYF31 (GRATINA 4G)
Leagoo	Power 2 Pro, Z6, M11
Lenovo	L58091 S5 Pro GT, L78071 Z5s, TB3-850F Tab3 8, PB2-670M Phab 2 Plus, L78032 Z5 Pro GT
LG GSM	LML211BL Rebel 4 5.0, LM-Q610MA Q7 Plus, LM-X410PM K30 Sprint, LG-Q710AL Stylo 4 Boost
Chinese phones	Chinese Brand One_DS DTECH, Truconnect Micro II, ECO Eco Senior_DS, Senseit L131, TT110 TTfone, STK R45i, NewMind F15 Plus, OBI F240_DS, NewMind F8, T130_DS TTsims, K689_DS, Kux T99, NewMind F15, Easyphone NP66, Chinese Brand U180 Ushining, A8 Mini_DS, Chinese Brand T19 Cectdigi, Itel it5630, Itel it2171, Slider W20C_DS
Chinese Android phones	Meitu MP180 V7 Tonino Lamborghini, 20181225 Red Chilli 7R Xiaolajiao, imo Q3 Plus, imo Q2 Plus, Chinese Brand S9 TEENO VMobile, Orange Melrose S9P, 360 180-A01 Phone N7, UMIDIGI A3 Pro_DS, Easyphone NP-10
Motorola GSM	XT1962-4_DS Moto G7, XT1965-3_DS Moto G7 Plus, XT1922-6 Moto G6 Play, XT1921-5 Moto E5 Play, XT1955-4_DS Moto G7 Power, XT1941-4 One
Nokia GSM	Fake Nokia E79+
NTT Docomo	F-02J
Nokia GSM	TA-1047_DS Nokia 1, TA-1060 Nokia 1 Dark Blue, TA-1125 3.1 Plus, TA-1087 9 PureView, TA-1082 9 PureView, TA-1022
Oppo	PCAM00 Reno7, GM1913 7 Pro, RMX1809 Realme 2, CPH1819 F7, CPH1893 R17 Neo



Samsung GSM	SM-T387V Galaxy Tab A 8.0 , Fake Samsung SM-G9750 Galaxy S10 PRO, SM-G930VL Galaxy S7, SM-A305G_DS Galaxy A30, SM-S757BL Galaxy J7 Crown, SM-T720 Galaxy Tab S5e, SM-M105M Galaxy M10, SM-A105F Galaxy A10, SM-A705FN_DS Galaxy A70, SM-G975W Galaxy S10 Plus, SM-J327W Galaxy J3 Prime, SM-A3050_DS Galaxy A40s, SM-M305M_DS Galaxy M30, SM-A6060 Galaxy A60, SM-A505FN_DS Galaxy A50, SM-A405FN_DS Galaxy A40, SM-J250M Galaxy J2 Pro, SM-G970W Galaxy S10e, SM-G973W Galaxy S10, SM-S357BL Galaxy J3 Orbit, SM-A105M_DS Galaxy A10, SM-A205G_DS Galaxy A20, SM-G970U Galaxy S10e, SM-G977N Galaxy S10 5G, SM-G887F_DS Galaxy A8s, SM-G532G_DS Galaxy J2 Prime, SC-02H Galaxy S7 Edge, SM-J810M_DS Galaxy J8, SM-G611F_DS Galaxy J7 Prime 2, SM-A9200_DS Galaxy A9s, SM-M205F Galaxy M20
Smartisan	OE106 JianGuo Pro 2s
Sony (SonyEricsson)	I4193 Xperia 10, G3123 Xperia XA1, E5633 Xperia M5 Dual, I4293 Xperia 10 Plus
swisstone	SC 580, SC 710, SC 330
Texet	TM-D327, TM-D328_DS
TRUE	SSB-508D Slim Phone
Ulefone	S8
VIVO	V1818CT Y91, Y51t L, 1804 V11, V1732A Y81s, V1818A U1, V1816A X23, V1824A_DS iQOO
Vodafone	889N Smart 4 Turbo
Wiko	W-V600 Harry2, W-P220 View 2 Go
Xiaomi	M1807E8A_SD MI 8 PRO, M1902F1A Mi 9, Xiaomi M1901F9E MI Play, MI 8, M1803E7SG Redmi Note 5, TD-LTE M1806D9E Mi Pad 4
ZTE GSM	Z559DL Blade T2 Lite, A1R Axon

Logical extraction

173 newly supported devices	
Alba	ACF18_DS
Alcatel	5017X OneTouch Pixi 3 4.5
Apple	iPad Mini (5th Gen) [A2133], iPad Air Wi-Fi (3rd Gen) [A2152], Fake MNRM2CH_A iPhone 7 Plus, Fake XS iPhone MQA52CH_A, Fake iPhone 8 MQ6K2ZP_A, iPhone XR [A1984], iPad Pro 12.9 [A1670], Fake iPhone X MT982ZA_A, Fake iPhone 7 MF354ZP_A, Fake iPhone X MQA62CH_A, Fake iPhone XS Max MNRJ2CH_A
Archos	50c Platinum
BLU	Vivo G0, T276T Jenny TV, T193 Tank II, Studio Mega, Vivo XL4, Vivo One PLUS
Blackview	A30, BV7000, A60, BV9500 Pro
Doogee	N10
Y8	
Fly	TS114, FF250_DS
Google	Pixel 3a XL
Homtom	H10, S16, C2
Huawei	PCT-L29_DS Honor View 20, COR-AL00 Honor Play, EVR-L29 Mate 20 X, SNE-AL00 Maimang 7, EVR-AL00 Mate 20 X, VCE-AL00_DS Nova 4, JAT-LX3 Honor 8A, POT-LX3 P Smart, LDN-LX2 Nova 2 Lite, MAR-LX3A P30 Lite, JKM-TL00 Enjoy 9 Plus



I-Mobile	T3_DS
Infinix	X608 HOT 6 Pro, X624B HOT7
K-Touch	I9
Konrow	Chipo 3, K-Flip, Slider_SD
Kyocera	KYF31 (GRATINA 4G)
Leagoo	Power 2 Pro, M11, Z6
Lenovo	L78071 Z5s, L58091 S5 Pro GT, TB3-850F Tab3 8, PB2-670M Phab 2 Plus, L78032 Z5 Pro GT
LG GSM	LM-X410PM K30 Sprint, LG-Q710AL Stylo 4 Boost, LML211BL Rebel 4 5.0, LM-Q610MA Q7 Plus
Chinese phones	Chinese Brand One_DS DTECH, ECO Eco Senior_DS, Easyphone NP66, Truconnect Micro II, Senseit L131, TT110 TTFone, STK R45i, NewMind F15 Plus, OBI F240_DS, NewMind F15, NewMind F8, T130_DS TTsims, K689_DS, A8 Mini_DS, Chinese Brand U180 Ushining, Chinese Brand T19 Cectdigi, Kux T99, Slider W20C_DS, Itel it5630, Itel it2171
Chinese Android phones	20181225 Red Chilli 7R Xiaolajiao, imo Q3 Plus, imo Q2 Plus, Chinese Brand S9 TEENO VMobile, UMIDIGI A3 Pro_DS, Easyphone NP-10, Orange Melrose S9P, 360 180-A01 Phone N7, Meitu MP180 V7 Tonino Lamborghini
Motorola GSM	XT1965-3_DS Moto G7 Plus, XT1962-4_DS Moto G7, XT1922-6 Moto G6 Play, XT1955-4_DS Moto G7 Power, XT1941-4 One, XT1921-5 Moto E5 Play
Nokia GSM	TA-1047_DS Nokia 1, TA-1060 Nokia 1 Dark Blue, TA-1125 3.1 Plus TA-1087 9 PureView, TA-1082 9 PureView
Oppo	PCAM00 Reno7, GM1913 7 Pro, RMX1809 Realme 2, CPH1819 F7, CPH1893 R17 Neo
Prestigio	PFP1286DUO_DS Muze K1
Samsung GSM	SM-T387V Galaxy Tab A 8.0, SM-M105M Galaxy M10, SM-A105F Galaxy A10, SM-A705FN_DS Galaxy A70, SM-G975W Galaxy S10 Plus, SM-J327W Galaxy J3 Prime, Fake Samsung SM-G9750 Galaxy S10 PRO, SM-G930VL Galaxy S7, SM-A305G_DS Galaxy A30, SM-G970W Galaxy S10e, SM-G973W Galaxy S10, SM-S357BL Galaxy J3 Orbit, SM-A105M_DS Galaxy A10, SM-A205G_DS Galaxy A20, SM-G977N Galaxy S10 5G, SM-G532G_DS Galaxy J2 Prime, SM-G887F_DS Galaxy A8s, SM-M105F_DS Galaxy M10, SM-J250M Galaxy J2 Pro, SM-A405FN_DS Galaxy A40, SM-A505FN_DS Galaxy A50, SM-A3050_DS Galaxy A40s, SM-M305M_DS Galaxy M30, SM-A6060 Galaxy A60, SM-S757BL Galaxy J7 Crown, SM-T720 Galaxy Tab S5e, SM-J810M_DS Galaxy J8, SM-G611F_DS Galaxy J7 Prime 2, SC-02H Galaxy S7 Edge, SM-A9200_DS Galaxy A9s, SM-M205F Galaxy M20
Smartisan	OE106 JianGuo Pro 2s
Sony (SonyEricsson)	I4193 Xperia 10, G3123 Xperia XA1, E5633 Xperia M5 Dual, I4293 Xperia 10 Plus
Swisstone	SC 580, SC 330, SC 710
Texet	TM-D327, TM-D328_DS
TRUE	SSB-508D Slim Phone
Ulefone	S8
VIVO	V1813BT_DS Z3, V1818CT Y91, V1732A Y81s, V1818A U1, 1804 V11, V1816A X23, V1824A_DS iQOO, Y51t L
Wiko	W-V600 Harry2
W-P220 View 2 Go	
Xiaomi	M1807E8A_SD MI 8 PRO, M1902F1A Mi 9, Xiaomi M1901F9E MI Play, M1803E7SG Redmi Note 5, TD-LTE M1806D9E Mi Pad 4
ZTE GSM	A1R Axon, Z559DL Blade T2 Lite



Cryptographic Hash Values Information

You can validate the integrity of Cellebrite's UFED software files by verifying their cryptographic hash values. This can help you identify whether a file has been changed from its original state.

Product	MD5	SHA-256 (Recommended)
Touch2 (cpkg)	49db657f4cf2fdf73373ef66e19988aa	d2b42bf2f6dae047f7fed10a483319cfe3ec09e986eac69161c1968b876adee6
4PC (cpkg)	777d8f44dbd5c01df9a2c44373f3fe9b	d51e5b9336e7abef1bb7eab762d0b7a3eb63bed46abab569708b09eee9699943
4PC (exe)	4cd4026563f409a1a1cbca89a9abd79d	7cbdac1bb69fca9118f943ba40d7aed8052f2edf2f6fc57fcbac720db4274f5e
UFED InField (cpkg)	845ea7565438d9573fadbda89b3889aa	56af0b9c88e1e6fc981cb799102d6d54e04665df7794888779d1508d338dd06e
UFED InField (exe)	55f0eba8d2ace8ab5f29ba8e8bf99142	a22b1b8cf01a8c27ab5a99a7b238c039da6560904c0df67c2f4a5944df60ab87
Permission Manager (exe)	13420e668079116b1f913dae794cb e7d	ddc9e20590c6a0cd618eb5d83d44d41da02214c37c46951943fa97c87ebff0fd
UFED Physical Analyzer	653bc933bc2acb9e9fa271dc804398fe	7136d92021e2b18c724188f80b535aa4e743b240dabef3534ce9e1c15b849d35
UFED Logical Analyzer	be6da17ce4304ab09b57a6672bf2d4e4	e1a24900fba4f34092e55b6ab963f11cedfbf52288bba68d970de09989768b15
Cellebrite Reader	027357cc5992cf067ade81a180969b13	c66ffbe1a1e8dab17efc317b24ef7374eb531960ccc6a3218aca838359a2c709

