

Release Notes

UFED 4PC, UFED Touch 2 & UFED Infield Version 7.16

March 2019

✦ Now supporting: 27,983 device profiles

Forensic methods	v. 7.16	Total
Logical extraction	57	11,145
Physical extraction*	61	6,818
File system extraction	60	6,769
Extract/disable user lock	20	3,251
Total	198	27,983

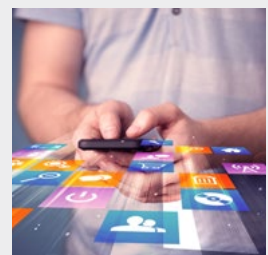
*Including GPS devices

The number of unique mobile devices with passcode capabilities is 5,243

Industry first: File system extraction from popular apps on devices running Android 6 and above!

When devices are not supported for physical extraction, use APK Downgrade to access application data on any Android device running version 6.0 and above. This capability adds support for over 40 applications including WhatsApp, Facebook, Facebook Messenger, Telegram, and more.

Note: This method extracts application data using the Android backup service. During the process, the selected application (*.apk file) is temporarily downgraded to an earlier version, so that the data can be extracted. The current version is restored at the end of the extraction process.



Advanced Logical Extraction for iOS devices

Whether you are a UFED or a UFED Physical Analyzer user, performing the Advanced Logical Extraction method in either solution delivers the exact same data for iOS devices. The new UFED Advanced Logical method is equal to the combination of UFED Physical Analyzer Advanced Logical Method 1 and Method 2.



UFED Recommended extraction flows

As part of our ongoing efforts to enhance the usability of our UFED software, we have incorporated an interactive wizard that guides you through the various extraction methods available for Android devices. This step-by-step guide highlights the optimal extraction path per device vendor and chipset to enable maximum retrievable data.

You can locate the extraction flows by clicking on the <Help> button in UFED.

Device List

Physical extraction while bypassing lock

29 newly supported devices	
Alcatel	4047X U5
BLU	C031P C6
HTC	6275, PB99400 Desire CDMA
Huawei	NMO-GT3, NMO-L31 GR5 Mini,
Infinix	X623 Hot 6X
LYF	LS-5010 Wind 1, LS-5504 Water 7, LS-5005 Water 4
LeTV	LEX622 Le S3
Lenovo	TB-7304X TAB 7 Essential
Chinese Android phones	Kenxinda S9, FREETEL FTJ17A00 REI 2, Truconnect X444 Drive II, EL W45
Nokia GSM	TA-1017 130
Samsung GSM	SM-J415FD Galaxy J4+, SM-T819 Galaxy Tab S2, SC-05G (Galaxy S6), SM-G1650 Galaxy Folder 2, SM-J327T Galaxy J3 2017, SM-J250G_DS Galaxy J2 Pro, SM-J610FN_DS Galaxy J6 Plus, DS Galaxy J7 Metal 2016J710MN
Tablets	Samsung GT-P3113TS Galaxy Tab 2 7.0



Tecno	F3
ZTE GSM	MO-01K

Physical extraction

61 newly supported devices	
AU	SHF32(AQUOS K)
Alcatel	5044C Verso, 9024 A30, 4047X U5
Asus	P01V Zenpad 7
BLU	C031P C6
Google	G013A Pixel 3 XL
Huawei	HWI-TL00 Nova 2S, HWW31 Nova 2 AU, JSN-AL00a Honor 8X, C199s Maimang S3, INE-LX2 Nova 3i, POT-LX1 P Smart, SHT-AL09 MediaPad M5 8.4, BAH2-W19 MediaPad M5 Lite, JKM-LX3 Y9 2019
Infinix	X623 Hot 6X
Kyocera	KYV37 Qua Phone AU
LYF	LS-5010 Wind 1, LS-5504 Water 7, LS-5005 Water 4
LeTV	LEX622 Le S3
Lenovo	TB-7304X TAB 7 Essential, TB-8504F Tab 4, TB-7504X Tab 7
LG GSM	LM-X510WM X Power 3
Chinese phones	Chinese Brand KSR-01 Vitek Black
Chinese Android phones	Wileyfox Swift 2, Kenxinda S9, FREETEL FTJ17A00 REI 2, Truconnect X444 Drive II, EL W45
Meizu	M852H X8
Motorola GSM	XT1921-2 Moto e5 Play, XT1900-1 Moto X4, XT1942-1 Moto P30 Note
NTT Docomo	SC-03J(Galaxy S8+), SO-01H (Xperia Z5), F-05J(arrows Be)
Nokia GSM	TA-1017 130
Oppo	PBCM10 R15x
Oppo	PBFM00 A7
Samsung GSM	SM-J415FD Galaxy J4+, SM-T813 Galaxy Tab S2, SM-A530W Galaxy A8 2018, SM-T819 Galaxy Tab S2
Sharp	SH-02E Aquos Phone Zeta Docomo, S3-SH Android One SoftBank, 503SH Aquos Xx2 Mini SoftBank, SBM200SH Pantone 6
Sony (SonyEricsson)	SO-01J Xperia XZ
Tecno	F3, CF7 Tecno
Tecno	KA70 Spark 2
VIVO	V1821A Nex, V1818CA Y95
Xiaomi	M1810E5A Mi Mix 3
ZTE GSM	MO-01K, MO-01J MONO, V0900 Blade



File system extraction while bypassing lock

20 newly supported devices	
Alcatel	4047X U5
HTC	6275, PB99400 Desire CDMA
Huawei	NM0-GT3, NM0-L31 GR5 Mini, TIT-AL00 Y6 Pro
LeTV	LEX622 Le S3
Lenovo	TB-7304X TAB 7 Essential
Chinese Android phones	EL W45
Samsung GSM	SM-J415FD Galaxy J4+, SM-DS Galaxy J1 Mini Prime, SM-J106B, SM-DS Galaxy J1 Ace Neo, SM-J111F, SM-G1650 Galaxy Folder 2, SM-J250G_DS Galaxy J2 Pro, SM-J610FN_DS Galaxy J6 Plus, DS Galaxy J7 Metal 2016, J710MN
Tecno	F3

File System extraction

60 newly supported devices	
AU	SHF32(AQUOS K)
Alcatel	5044C Verso, 9024 A30, 4047X U5
Asus	P01V Zenpad 7
BLU	C031P C6
Google	G013A Pixel 3 XL
Huawei	HWI-TL00 Nova 2S, HWW31 Nova 2 AU, JSN-AL00a Honor 8X, C199s Maimang S3, INE-LX2 Nova 3i, POT-LX1 P Smart, SHT-AL09 MediaPad M5 8.4, BAH2-W19 MediaPad M5 Lite, JKM-LX3 Y9 2019
Infinix	X623 Hot 6X
Kyocera	KYV37 Qua Phone AU
LYF	LS-5010 Wind 1, LS-5504 Water 7, LS-5005 Water 4
LeTV	LEX622 Le S3
Lenovo	TB-7304X TAB 7 Essential, TB-8504F Tab 4, TB-7504X Tab 7
LG GSM	LM-X510WM X Power 3
Chinese phones	Chinese Brand KSR-01 Vitek Black
Chinese Android phones	Wileyfox Swift 2, Kenxinda S9, FREETEL FTJ17A00 REI 2, Truconnect X444 Drive II, EL W45
Meizu	M852H X8
Motorola GSM	XT1921-2 Moto e5 Play, XT1900-1 Moto X4, XT1942-1 Moto P30 Note
Nokia GSM	Fake Nokia E79+
NTT Docomo	SC-03J(Galaxy S8+), SO-01H (Xperia Z5), F-05J(arrows Be)
Oppo	PBCM10 R15x, PBFM00 A7
Samsung GSM	SM-J415FD Galaxy J4+, SM-T819 Galaxy Tab S2, SM-T813 Galaxy Tab S2, SM-A530W Galaxy A8 2018



Sharp	SH-02E Aquos Phone Zeta Docomo, S3-SH Android One SoftBank, 503SH Aquos Xx2 Mini SoftBank, SBM200SH Pantone 6
Sony (SonyEricsson)	SO-01J Xperia XZ
Tecno	F3, CF7 Tecno, KA70 Spark 2
VIVO	V1821A Nex, V1818CA Y95
Xiaomi	M1810E5A Mi Mix 3
ZTE GSM	MO-01K, MO-01J MONO, V0900 Blade V9

Logical extraction

57 newly supported devices	
Alcatel	4047X U5, 5044C Verso, 9024 A30
Asus	P01V Zenpad 7
BLU	C031P C6
Google	G013A Pixel 3 XL
Huawei	HWI-TL00 Nova 2S, HWW31 Nova 2 AU, BAH2-W19 MediaPad M5 Lite, C199s Maimang S3, INE-LX2 Nova 3i, JSN-AL00a Honor 8X, JKM-LX3 Y9 2019, POT-LX1 P Smart, SHT-AL09 MediaPad M5 8.4
Infinix	X623 Hot 6X
Kyocera	KYV37 Qua Phone AU
LYF	LS-5010 Wind 1, LS-5504 Water 7, LS-5005 Water 4
LeTV	LEX622 Le S3
Lenovo	TB-7304X TAB 7 Essential, TB-8504F Tab 4, TB-7504X Tab 7
LG GSM	LM-X510WM X Power 3
Chinese phones	Chinese Brand KSR-01 Vitek Black
Chinese Android phones	Wileyfox Swift 2, Kenxinda S9, FREETEL FTJ17A00 REI 2, Truconnect X444 Drive II, EL W45
Meizu	M852H X8
Motorola GSM	XT1900-1 Moto X4, XT1942-1 Moto P30 Note, XT1921-2 Moto e5 Play
Oppo	PBFM00 A7, PBCM10 R15x
Samsung GSM	SM-J260F Galaxy J2 Core, SM-J415FD Galaxy J4+, SM-A530W Galaxy A8 2018, SM-T819 Galaxy Tab S2, SM-T813 Galaxy Tab S2
Sharp	SH-02E Aquos Phone Zeta Docomo, 503SH Aquos Xx2 Mini SoftBank, S3-SH Android One SoftBank, SBM200SH Pantone 6
Sony (SonyEricsson)	SO-01J Xperia XZ
Tecno	F3, CF7 Tecno, KA70 Spark 2
VIVO	V1818CA Y95, V1821A Nex
Xiaomi	M1810E5A Mi Mix 3
ZTE GSM	MO-01J(MONO) MONO, MO-01K, V0900 Blade V9



Cryptographic Hash Values Information

You can validate the integrity of Cellebrite's UFED software files by verifying their cryptographic hash values. This can help you identify whether a file has been changed from its original state.

Product	MD5	SHA-256 (Recommended)
UFED Touch2 (cpkg)	9a3264971583a85a3bbc73896616e554	afac2f9fe7933cfbafed4412208de1fd4a8a4f2e1d7ace9b476766049a07b123
4PC (cpkg)	cbe129b0f9ad139cff8e3d44db5fb94a	7b0e8abc0236254cdf543d1d4efe07dba24fd1dd8ab0d998a3abde95c1d0ee5
4PC (exe)	57f04be603ce1537b6f5e7d6fc939111	2c28e2032cbe28caa83b94b18e22d26622e508940154f47c0dc6f693611d9dde
UFED InField (cpkg)	389f83a5bfe4777387a34ff521114359	d142203eecb8ef286f844f5aa1bba4fb354beef6dc193ee1ee36ef63d6baff83
UFED InField (exe)	8b6a9ad7b2b1fc36c348c8b60c546b7e	115e0dd1552679373b4e979b9c30de4d6a1f5e9d0633015f8d0445d41a17755d
Permission Manager (exe)	4e330a07ae51d9db32e72ab7e087bc8f	d692119b690f2b6386b54aa1438a08ea3844c4861b67af85a2c08c845a975f45

